



Marsham Street, Westminster
London SW1P

GARTONJONES.COM



Marsham Street, Westminster
London, SW1P

GARTON JONES.COM

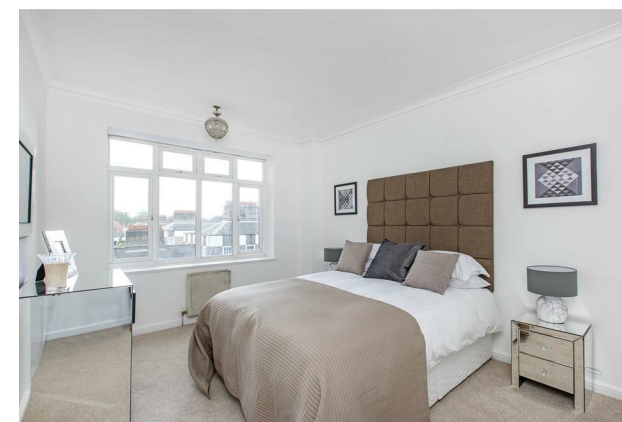
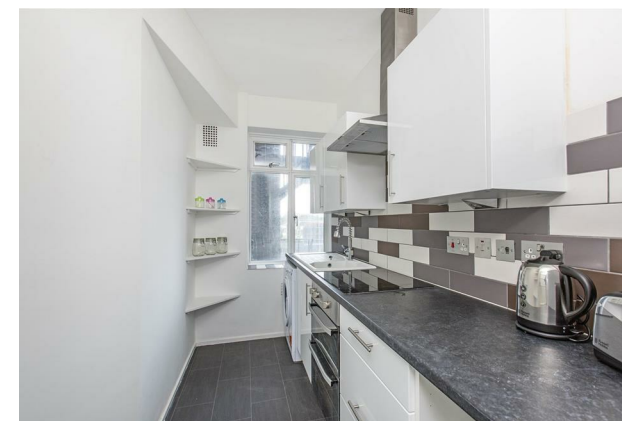
49 Marsham Street Lettings:
London +44 (0) 20 7340 0480
SW1P 3DP westminster@gartonjones.com
www.gartonjones.com

£600 Per Week

A bright and spacious 1 bedroom apartment available to let located on the 6th floor (with lift access) of this established and very popular development in Westminster, close to the River Thames, Houses of Parliament and Tate Gallery. The accommodation comprising of a separate modern kitchen, reception room with access to Juliette balcony, good size double bedroom and modern bathroom. Marsham Court is an extremely secure offer development offering residents a 24 hour concierge service. Marsham Street is well located to a good selection of local amenities including shops and many popular restaurants. The transport services of Pimlico, Westminster, St James's Park and Victoria are all within walking distance. The superb iconic London landmarks of Big Ben, Houses of Parliament and the Tate Gallery are close by. Just a short walk away is the Chelsea College of Arts and St Johns Smith Square Concert Halls offering a variety of classical musical performances. Garton Jones manage this apartment and are located on the same road for viewings.

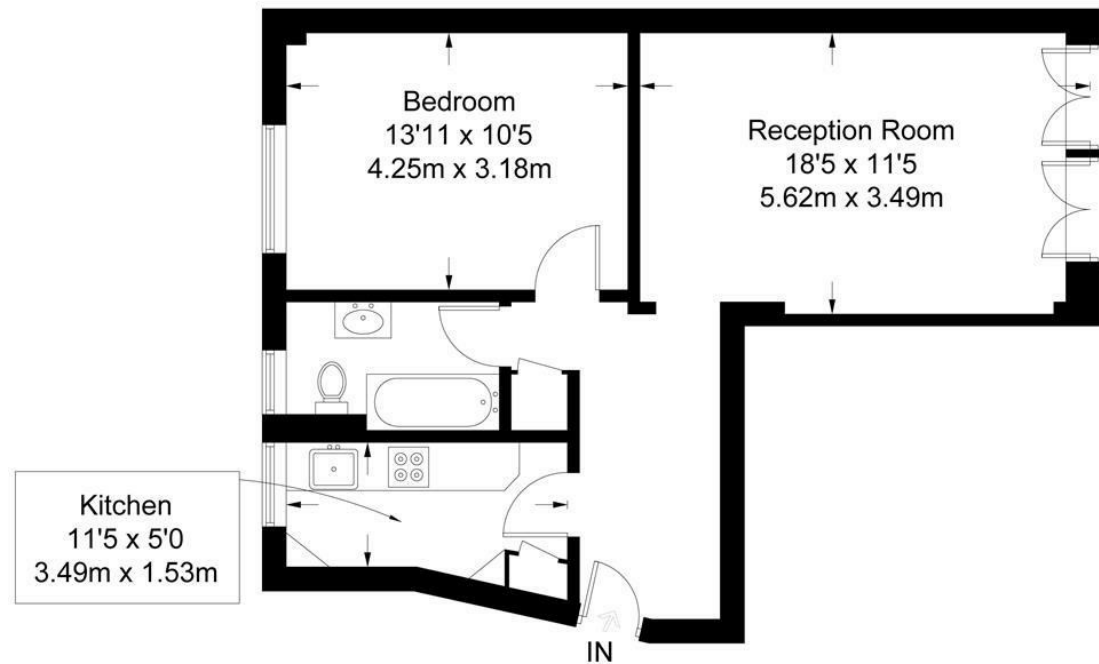
Deposit 5 Weeks
Minimum Term 6 Months
Council Tax Band E (London Borough of Westminster)
EPC Rating: C (71)

- One Bedroom Apartment
- Stylish Art Deco Block
- 6th Floor (With Lift)
- 573 Square Feet (53.2 Sq.M)
- Reception Room with Access to Juliette Balcony
- Separate Kitchen
- Bathroom
- 24 Hour Concierge
- Close to Local Shops & Restaurants
- Walking Distance to St James's Park, Westminster, Pimlico & Victoria Transport Links



Marshall Court

Approximate Gross Internal Area = 573 sq ft / 53.2 sq m



Sixth Floor

